

# BELAIR

HILLSIDE RESIDENCIES





# BOOK HIGHLIGHTS

AMENITIES

HIGHLIGHTS

AIR QUALITY INDEX

PROXIMITY

SITEMAP

CONTACT





# AN OASIS OF COMFORT

Set your Sights on Glorious Mountains  
Overflowing with Sensational Amenities



Luxury Apartments | Uninterrupted Views of the Hills | World Class Amenities





# A BREATH OF FRESH AIR

BeAir is pure manifestation of finesse and art blended with convenience. Designed to exude the utmost comfort and pleasure.

The project perfectly brings together the serenity and tranquility of a rich, natural setting with ultra-modern amenities.



# WHERE LIFE COMES TOGETHER

Step into a realm of lavish living and vibrant sophistication with Be-  
lAir's prodigious and exquisite communities. We build homes that re-  
define living standards, putting your needs and aspirations first. We  
develop thriving neighbourhoods that reflect the quality of life you  
deserve. We create healthy, lively communities that blend extrava-  
gance with glamor and white-gloved finesse.







# BELAIR

## HILLSIDE RESIDENCIES

BelAir is more than a just a community, it is a way of life. Its balance of open spaces and beautiful homes soothes the senses and puts your mind at rest as you take in the majestic wadis and spectacular trails.







# WHERE LIFE ALWAYS HITS A HIGH NOTE

The epitome of style and contemporary class, the interiors of BelAir are tastefully designed and crafted. With marble features, sleek wooden elements and superior finishes, every corner of your home will exude refined elegance.





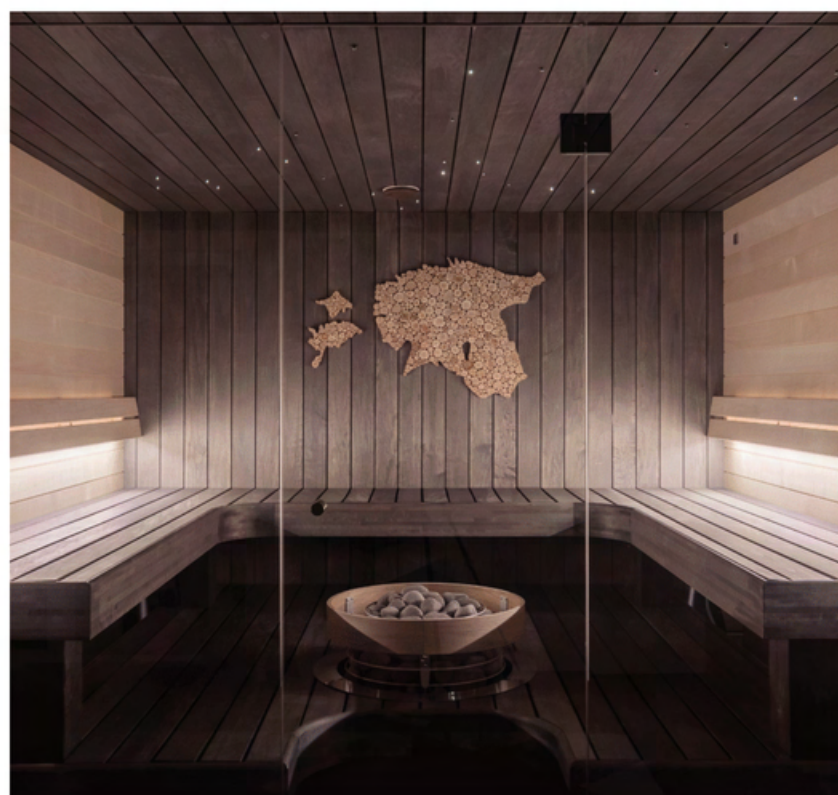
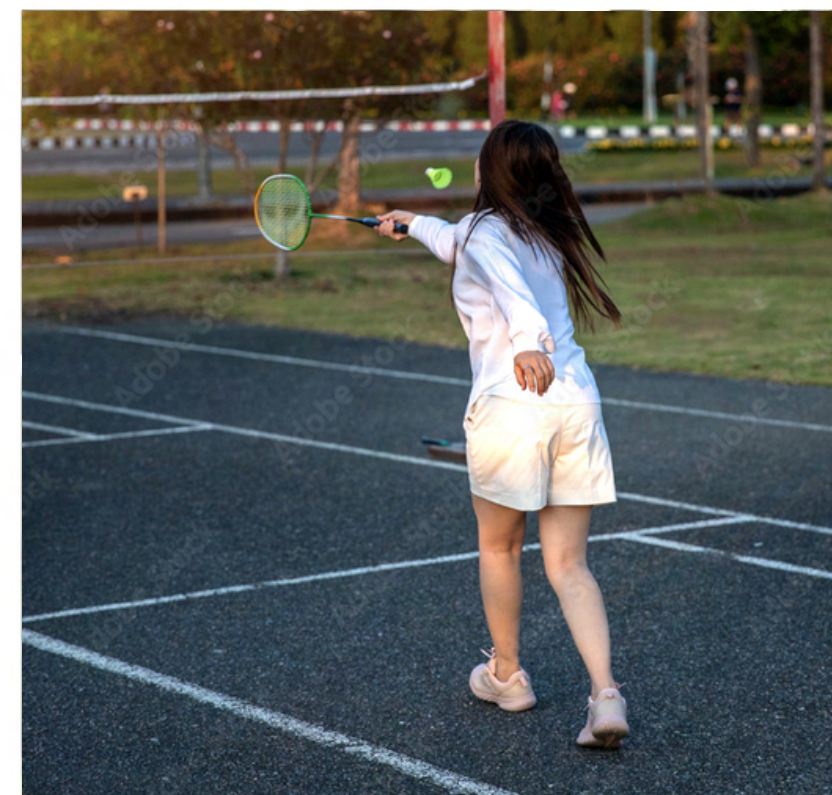
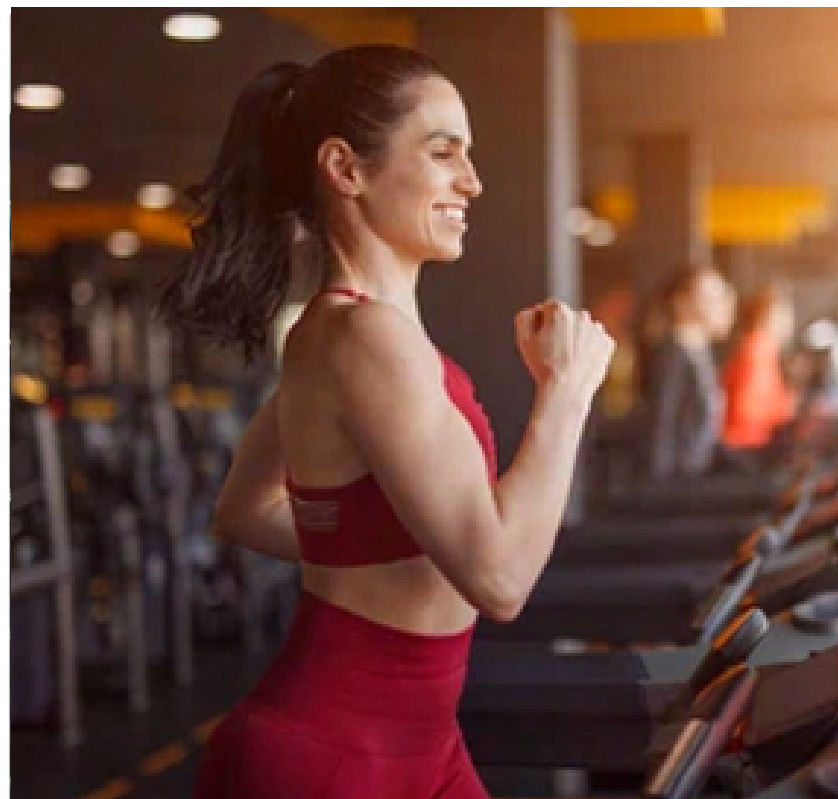


# A GEM IN THE MOUNTAINS

At BelAir, our vision for a modern and sophisticated life is intertwined with the highest levels of luxurious lifestyles, to cultivate homes people aspire for.

Whatever the lifestyle that you lead, BelAir's beautiful landscapes, lush greenery, diverse wildlife and rich eco-system allow you to touch base and connect with nature throughout the day.





# AMENITIES

Residents of BelAir live in prime luxury, with ready access to numerous amenities.

01/ *Gymnasium*

02/ *Rooftop swimming pool*

03/ *Steam and sauna*

04/ *Yoga Center*

05/ *Badminton Court*

06/ *Outdoor play area*





# A WORRY FREE LIFE AWAITS YOU

---



1 & 2 BHK  
Apartments



Gated  
Community



Concierge  
Desk



Laundry  
Room



Daily Needs  
Store



Health  
Centre



Kids Play  
Area



24X7  
Security



Driver  
Dormitory







## UNFORGETTABLE EXPERIENCES FOR THE WHOLE FAMILY

The project features world-class infrastructure that plays an essential role in reaffirming its position as a superb destination for a new way of life.

With a wide selection of leisure and entertainment amenities, The Radiance Homes offers unparalleled experiences for the whole family.





# EVERGREEN SERENITY

Nestled in the foothills of Dagshai with meticulously designed lifestyle, nature, and tranquility, this green jewel is the ideal escape from the city without compromise.

*Dagshai's most exclusive property*







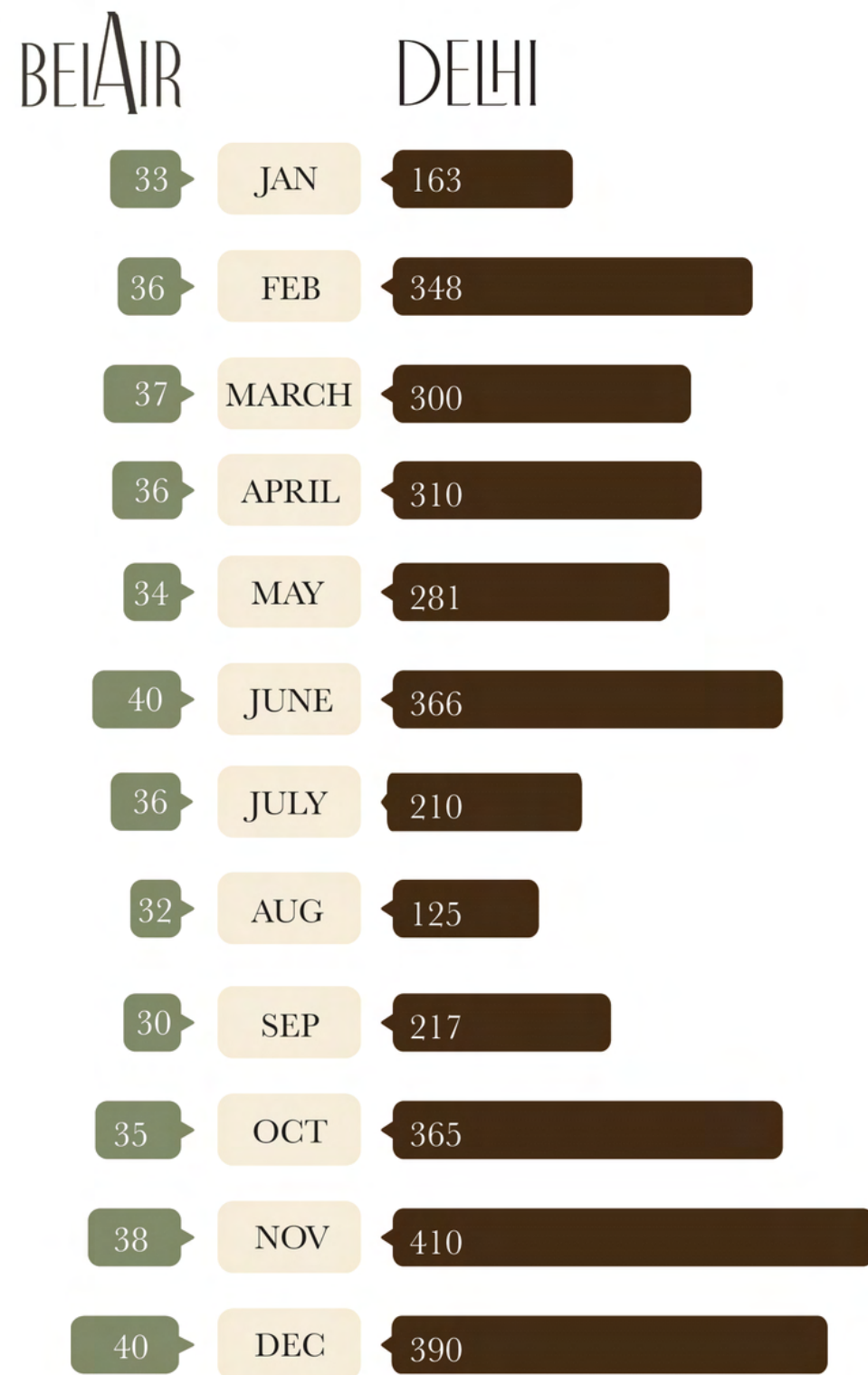
# LIFE REFINED

At BelAir, you will find yourself surrounded by nature, the pristine forests of stately deodar and pine trees flank the sides, and straight ahead, almost floating above the clouds, is India's crowning glory: the majestic Himalayas





# AIR QUALITY INDEX



Altitude : 5500 Ft Above Sea Level

Climate : Misty clouds with chilly weather in the evenings

Summer Temperature : Minimum 17° C | Maximum 28° C

Winter Temperature : Minimum 2° C | Maximum 18° C



*\* Weather conditions are subject to change.*



60 minutes drive from  
**CHANDIGARH**

90 minutes drive from  
**CHANDIGARH**  
INTERNATIONAL AIRPORT

25 minutes drive from  
**KASAULI**

5 hours drive from  
**DELHI**





# SITE MAP

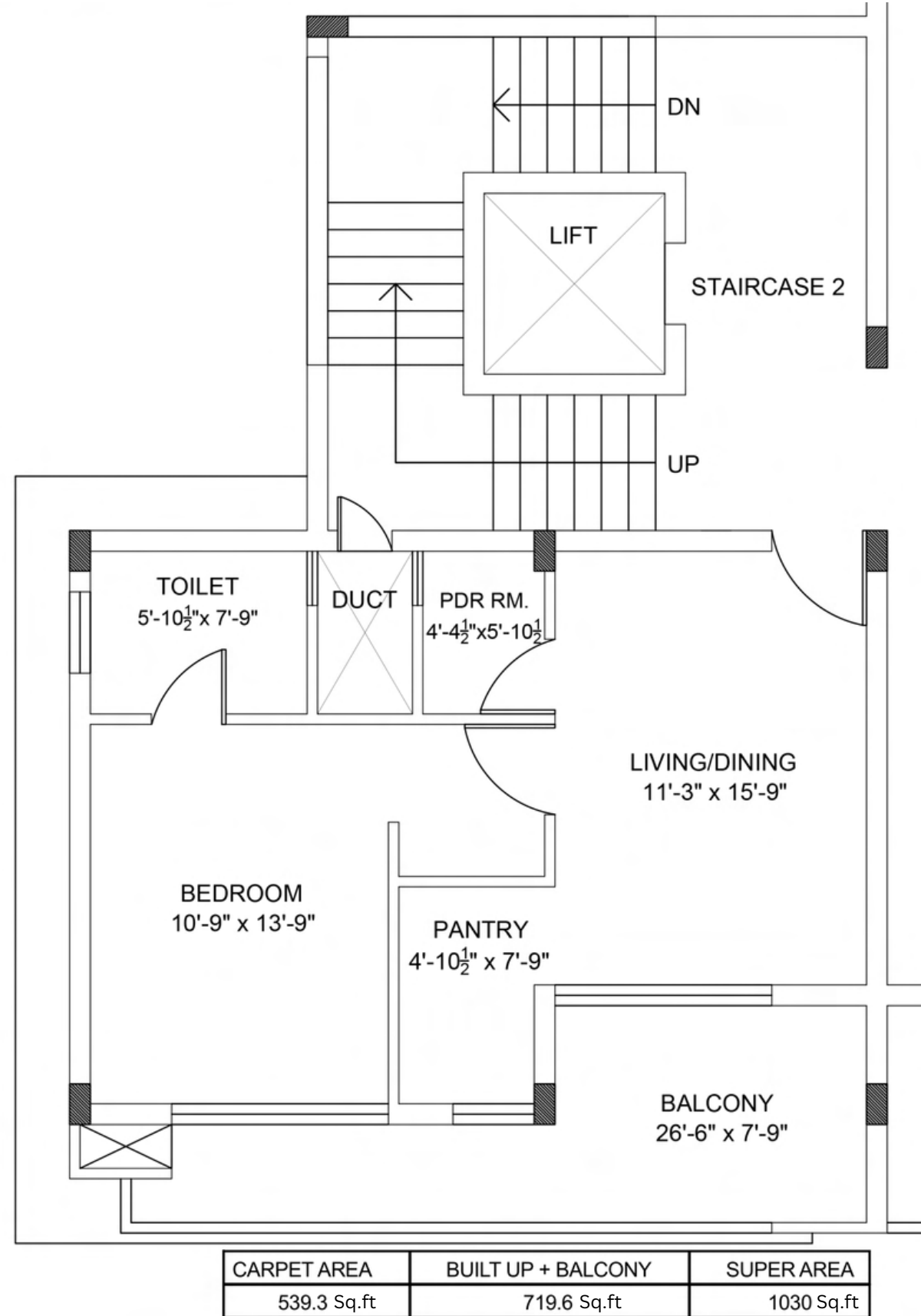
Overlooking the beautiful view of the mountains and located in close proximity to some of the most iconic landmarks of Himachal Pradesh, BelAir is the perfect combination of privacy and connectivity, bringing a true sense of belonging to its community

- 01** 15 minutes from Lawrence school Sanawar
- 02** 10 minutes from Heritage railway track
- 03** 20 minutes from Kasauli heritage market

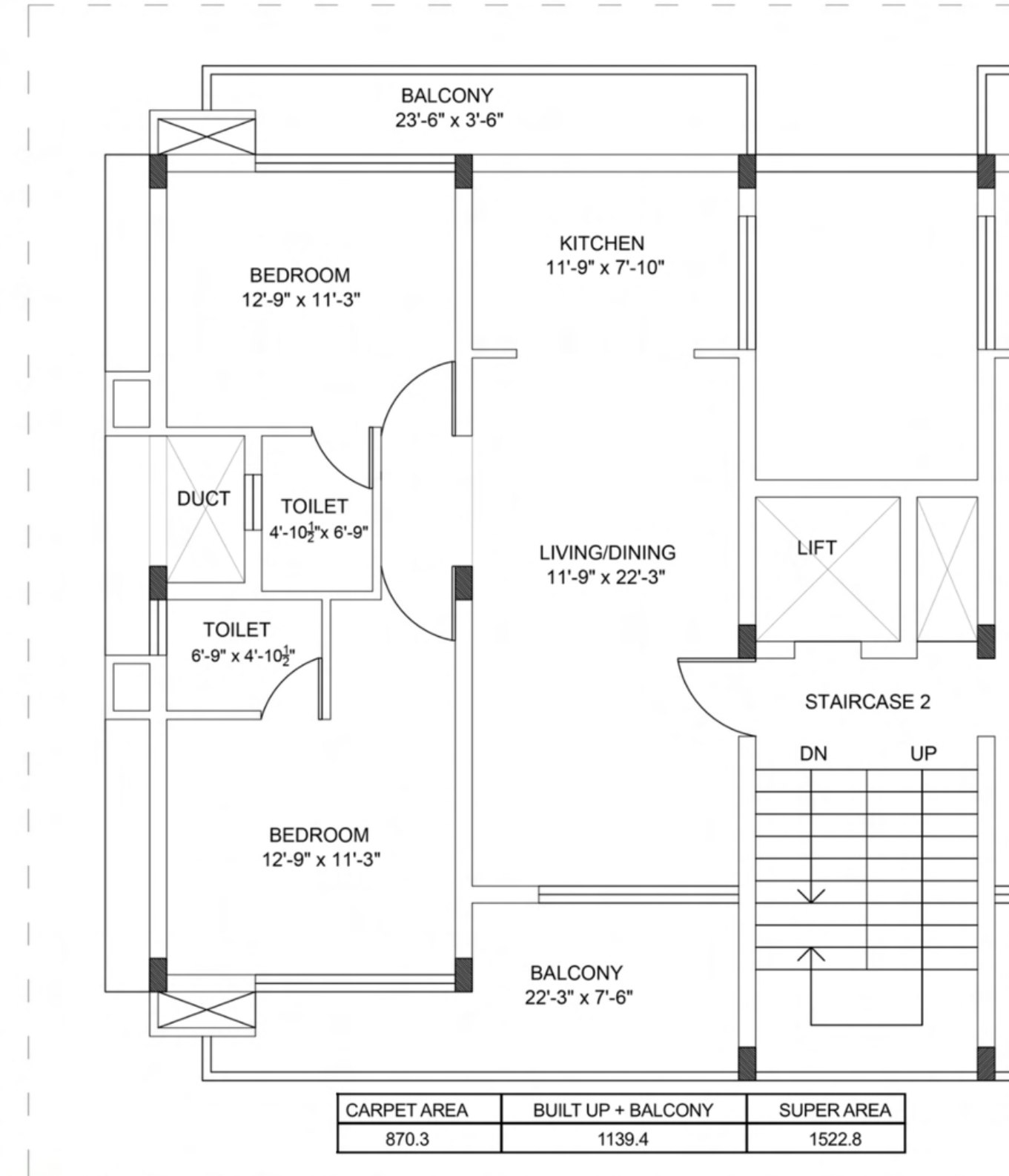




## 1 BHK FLOOR PLAN



## 2 BHK FLOOR PLAN





Bedroom & Living Room	<ul style="list-style-type: none"><li>• External Window</li><li>• Doors</li><li>• Flooring</li><li>• Walls</li><li>• Others</li></ul>	<ul style="list-style-type: none"><li>• UPVC/Aluminium</li><li>• Flush Doors/Shutters with hardwood frame/Steel doors</li><li>• Vitrified tiles/Wooden flooring</li><li>• Acrylic emulsion</li><li>• Wardrobes in all bedrooms</li></ul>
Modular Kitchen	<ul style="list-style-type: none"><li>• Walls</li><li>• Flooring</li><li>• Kitchen Slab</li><li>• External Windows</li><li>• Walls</li></ul>	<ul style="list-style-type: none"><li>• Glazed tiles up to 2ft. from slab level</li><li>• Vitrified tiles</li><li>• Granite</li><li>• UPVC/Aluminium</li><li>• Acrylic emulsion</li></ul>
Bathrooms	<ul style="list-style-type: none"><li>• Walls</li><li>• Flooring</li><li>• Doors</li><li>• External Window</li><li>• Fitting</li></ul>	<ul style="list-style-type: none"><li>• Glazed tiles up to door height and Acrylic emulsion</li><li>• Anti skid tiles</li><li>• Flush doors with polish/paint</li><li>• UPVC/Aluminium</li><li>• Branded Chinaware &amp; CP Fittings</li></ul>
Staircase/ Common Corridors	<ul style="list-style-type: none"><li>• Walls</li><li>• Flooring</li><li>• Others</li></ul>	<ul style="list-style-type: none"><li>• Acrylic Emulsion</li><li>• Granite</li><li>• MS railing</li></ul>
Balconies	<ul style="list-style-type: none"><li>• Flooring</li><li>• Others</li></ul>	<ul style="list-style-type: none"><li>• Vitrified Tiles</li><li>• MS railing</li></ul>
Power Backup	<ul style="list-style-type: none"><li>• Paid Power Backup</li></ul>	<ul style="list-style-type: none"><li>• 3 KVA to 4 KVA (As per category of apartments)</li></ul>
Electrical Work	<ul style="list-style-type: none"><li>• Electrical Work</li></ul>	<ul style="list-style-type: none"><li>• Modular switches, Cable, TV &amp; Telephone points</li></ul>
Finishing	<ul style="list-style-type: none"><li>• Internal Finish</li><li>• External Finish</li></ul>	<ul style="list-style-type: none"><li>• Acrylic emulsion/putty on walls &amp; all room ceilings</li><li>• Exterior emulsion weather proof paint/texture paint</li></ul>
Plumbing Work	<ul style="list-style-type: none"><li>• Plumbing Work</li></ul>	<ul style="list-style-type: none"><li>• SWR, PPR, CPVC, UPVC pipes of reputed make</li></ul>



## INTERIOR FEATURES

### WHITE GOODS

- Smart TV
- Digital Safe
- Geysers & Exhaust Fans
- Chimney
- Induction Plate
- Microwave
- Refrigerator
- Water Purifier
- Room Heating

### FURNITURE & FIXTURES

- Double Bed with Night Stands
- Spring Mattress
- Bed Linen
- Curtains
- Sofa with Centre Table
- Dining Table
- Outdoor Furniture
- Decorative Lights
- Vanity with Mirror
- Crockery / Cutlery / Cookware







# CONTACT INFO

SCO 1b & 1c , 3rd Floor;  
JLPL, Sector 66A,  
Airport road, Mohali

Phone number:  
7642-000-444